



Welcome!

In the summer of 2009, Community Connections elementary sites are working together to offer elementary-age children eight continuous weeks of summer day camp. Our mission is to provide children with fun and exciting activities

that will challenge them, teach them new skills, and help them to better enjoy their summer vacation. We have many exciting themes to choose from, including Carnival!, H2O, Challenge by Choice, Good Old Summertime, Sports Sampler, Tennis, Shipwrecked, Passport to the World, Wind & Water...and more! Look inside this brochure for details and join us this summer!

How to Register

The weeks will fill quickly, so please register early. Sign-up deadline is June 1st.

1. Fill out the sign-up form in this brochure.
2. Send in the sign-up form and 2009-2010 Registration form, (or check with Central to see if your 08-09 form is current) with \$25 fee per child (non-refundable) to:
WCSU/Community Connections
58 Barre St.
Montpelier, VT 05602
3. Upon receipt of your sign-up form and fee, you will receive a confirmation. If signing up after June 1st, please call 223-3456 first about space availability.

Registration form is online at www.communityconnections.us

Day Camp Staff

Community Connections staff are experienced educators who are certified in First Aid and CPR. We maintain a staff to child ratio of 1:8 for camp programs. At each site, there will be trained, experienced Community Connections staff, including many familiar faces from our school-year programs.

All The Basics

Ages: Open to students entering grades 1-6 for the upcoming school year. Activities and group breakouts will vary to meet the needs and interests of different ages & abilities.

Time: Camp runs 8:30 a.m. - 4:30 p.m., extended care available. Campers should arrive at 8:30 a.m.

Cost: Sliding scale of \$130-\$175 per camper, per week. (See below for payment information.)

Forms: 2008-09 Registration (medical) Form, or new 2009-10 Reg.

EXTENDED CARE/LATE FEES

We offer extended care from 7:30-8:30 am and 4:30-5:30 p.m. There is a \$5 fee for each extended care session per child. There will be a \$5 late fee for every 15 minutes for pick-ups after 5:30. Pre-registration is required!

SLIDING SCALES AND ALTERNATIVE FUNDING

Community Connections wants all children to be able to come regardless of ability to pay. Therefore, we offer alternative payment arrangements, such as state childcare subsidies, volunteering, sibling discounts, and limited scholarships. On the sliding scale, you may choose any point on the scale for full payment, from \$130 to \$175. Please call 223-3456 for more info.

PAYMENT SCHEDULE

A \$25 non-refundable fee is due at the time of sign-up. It will be applied to the total cost. One half of total summer cost is due by May 15, and the balance is due by June 12. Space is limited, therefore your spot will not be held until payment is received, unless other payment plans have been made in advance. **No refunds after June 1.**

DAILY PACKING LIST

Send a healthy bag lunch with your child (no soda or candy.)
Send appropriate clothing—outdoor gear, sneakers, extra socks, bathing suit, towel, hat, sunscreen, water shoes/sandals.
Send a water bottle. Label everything!

Kids will be kids! But...

Community Connections staff are experienced and trained in working with kids of all ages. To protect the safety and well-being of all children, we have expectations and standards for behavior. If a child is unable to meet those standards, even with all the support we are able to provide, we may have to call the parent or guardian and ask that the child be removed from camp. Please help us by telling us anything about your child that will help us meet his or her needs.



Community Connections



Summer Day Camps

Entering Grades 1-6

June 22-August 14, 2009

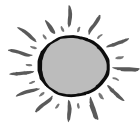
Camps are based at the following schools: Doty Memorial, East Montpelier, Rumney Memorial, and Montpelier Public Schools, with excursions to local swimming areas and great field trips!

Community Connections

58 Barre Street, Montpelier, VT 05602

(802) 223-3456

www.communityconnections.us



Summer Day Camps

Weekly Core Activities

Join us for 8 weeks of summer fun and learning! We will begin our days with morning meeting and group games. We will travel to local swimming areas each week, like Wrightsville Beach and Elmore State Park, to swim and canoe. Camps will be divided into age groups for activities when appropriate. Along with



- core camp activities, each camp will have its own special theme, with games, projects, crafts, and field
- trips. (Schedules subject to change.)

Week #1

June 22-26

Carnival!

Morning Music Option

E. Montpelier Elem.

Week #2

June 29-July 2

Go-H2O

(NO CAMP JULY 3!)

Doty Memorial

(Worcester)

Week #3

July 6-July 10

Challenge by Choice

East Montpelier Elem.

Week #4

July 13-17

Good Ol' Summertime

Main St. Middle School

Week #5

July 20-24

Sports Sampler

Rumney Memorial

(Middlesex)

Week #5

July 20-24

Tennis, Anyone?

(grades 3-6 only)

Two Barn Tennis Camp

(Cummings Rd., off County Rd.)

Week #6

July 27-July 31

Shipwrecked

Doty Memorial

(Worcester)

Week #7

Aug 3-Aug 7

Passport to the World

Main St. Middle School

Week #8

Aug 10-Aug 14

Wind & Water

East Montpelier Elem.



Community Connections

Carnival!

Almost as much fun as running away to join the circus! Stilting, juggling, clown acts, midway games, fortune tellers, food & fun!

For Music Lovers- Instead of morning carnival activities, join music instructor Lisa Carlson from 9:30 - noon daily, to learn a variety of different instruments and musical styles in a playful, hands-on environment.

Carnival Options: 1.Carnival only-no music=regular fee;
2.Carnival with morning music=additional \$50 on top of regular fee;
3.Morning music only, 1/2 day=sliding scale \$65-\$85.

Go-H2O

Feel the rush of water as you tube down the Winooski. Where does the North Branch start? Explore the art of dowsing and the aquifers of Elmore. Lots of water, lots of fun!

Challenge by Choice

Come test your skills and stamina - brain teasers, scavenger hunts, trivia, puzzles, low-ropes & hiking. How far can you push yourself? How much can you do? Have fun trying!

Good Ol' Summertime

Relax, roll in the grass, gaze at the clouds, play with clay, make ice cream and splash in the water....these are just a few of the things that mark the wonder of summer in VT.

Sports Sampler

Try out a different sport every day of the week! Keep your days action packed with new and exciting opportunities: tae kwon do, gymnastics, dance, or team sports.

Tennis, Anyone? (grades 3-6 only)

For beginners or advanced players, get your game in gear with expert tennis coaching from Pro Paul Dayton. Other games and activities will round out the day.

Shipwrecked

We won't be stranded, like Robinson Crusoe, but we'll pretend we are! Fort building, survival skills, and cooking. All the things you'll need to know to get by in the wild.

Passport to the World

Learn about cultures from around the world from our special international guests! Games, food, dance, crafts, and more with an international twist!

Wind and Water

Explore all the fun that wind and water have to offer - kites, sailing, swimming and boating. End the week at Whale's Tale Water Park.

Sign-Up Form

(Please include \$25 per child sign-up fee with this form, non-refundable.)

Name of first child _____ Entering Grade _____ School _____
 Name of second child _____ Entering Grade _____ School _____
 Parent/Guardian Name _____ Phone(s) _____
 Address _____ City/State _____ Zip _____ Email _____

Weeks: Circle the activities you want to attend. We will confirm by mail.

Week 1: Carnival! OR Carnival+Music OR Music only Week 5: Sports Sampler OR Tennis Anyone? (circle one)

Week 2: Go-H2O Week 6: Shipwrecked

Week 3: Challenge By Choice Week 7: Passport to the World

Week 4: Good Ol' Summertime Week 8: Wind & Water

Need extended care? _____ Specify dates & hours (earliest drop off 7:30 am): _____

Would you like to volunteer to chaperone? (Specify dates) _____

Check here if you would like to be contacted to discuss alternative funding options.

I am eligible for state subsidy at _____%. My subsidy specialist's name is: _____

Please send this sign-up, a 2009-2010 Registration (medical) Form, and \$25 per child to Community Connections; 58 Barre St., Suite 309; Montpelier, VT 05602. Checks payable to "WCSU/Community Connections".

*If the info on your 08-09 Registration Form is still current and you would like to keep it through next year, please sign here _____ (For questions regarding how current your info is, call 223-3456.)