



**Community Connections**  
**Winter Vacation Day Camps 2012**  
 February 27th through March 5th



To register, mail sign-up and registration form with payment  
 by **February 22 to: Community Connections; 73 Main St #33; Montpelier, VT 05602.**  
 Visit our website to download a registration form, [www.communityconnections.us](http://www.communityconnections.us).  
 Call Ginny or Heather at 223-3456 to check on space available after the February 22 deadline.

**ALL THE BASICS:**

**Camps run from 8:30-4:30, extended care is available**

- Camps cost \$25-35 per day (sliding scale) unless otherwise indicated in the description.
- Before and after care is available for \$5 per session. Let us know your schedule. Pre-registration is required!
- **After 5:30, there is a \$5 late fee for every 15 min.!!!**
- We need a current registration/medical form for your child. If you have not filled one out this year, we will ask for one before your child can attend (visit our website).
- We will provide healthy snacks.
- Transportation is provided for all trips.
- Admission costs are included.
- Please let us know how we may best help your child enjoy camp, and discuss any special needs.
- CC field trips are money-free activities. We will not go to gift shops, vending machines, arcades, etc.
- Personal audio and video games are allowed at your own risk, and only on the bus.

**For weather related questions, space availability, or to report an absence, call 223-3456.**

**Space is limited for these camps, so register early!**

**Registration closes February 22nd.**  
 Sorry—no refunds for cancellations after Feb.22. We have hired staff and held a place for your child based on your registration. Payment or payment plan must be received by February 22.

***\*Alternative Funding Available\****

- ◆ State subsidies
  - ◆ Reduced rates offset by partial scholarships, volunteering, or providing snacks
- Please indicate on the form below if you wish to explore any of these options.

Find us online at [www.communityconnections.us](http://www.communityconnections.us)

**Kids will be kids! But...**

Community Connections staff are experienced and trained in working with kids of all ages. To protect the safety and well-being of all children, we have expectations and standards for behavior. If a child is unable to meet those standards, even with all the support we are able to provide, we may have to call the parent or guardian and ask that the child be removed from camp. Please help by telling us anything about your child that will help us meet his or her needs.

**PACKING LIST**

- Send a healthy bag lunch with your child. (no soda or candy)
- Send appropriate clothing/items: swim suit, towel, sneakers, outdoor gear, dry socks, jackets, boots, hats, gloves, etc.
- Send a water bottle.
- **Please label your child's belongings!**

My child(ren) \_\_\_\_\_, Grade(s) \_\_\_\_\_, School \_\_\_\_\_ would like to attend  
**(and I give them permission to attend and be transported by bus when needed)** the following camp programs:

Parent/Guardian Signature \_\_\_\_\_ Phone # 's \_\_\_\_\_

Parent name \_\_\_\_\_ Address \_\_\_\_\_

\_\_\_ Enclosed is \$ \_\_\_\_\_ to cover my child's enrollment (cash or checks to WCSU / Community Connections).

\_\_\_ I am eligible for state childcare subsidies. (Contact your specialist to let them know sign-up dates and hours of attendance.)

\_\_\_ Please contact me to explore alternative funding.

\_\_\_ I would like to chaperone: Name \_\_\_\_\_ Phone \_\_\_\_\_ Date/Event \_\_\_\_\_

Date	Camp	Cost	Pick-up/drop-off	List times for extended care.	Notes
___ Monday, Feb. 27	___ All About Snow	\$25-\$35	___ U-32	___ am (\$5) ___ pm (\$5)	
___ Tuesday, Feb. 28	___ Hot & Cold	\$25-\$35	___ U-32	___ am (\$5) ___ pm (\$5)	
___ Wed., Feb. 29	___ Treasure Hunting	\$25-\$35	___ Union	___ am (\$5) ___ pm (\$5)	
___ Thursday, Mar. 1	___ Swim & Gym	\$25-\$35	___ U-32	___ am (\$5) ___ pm (\$5)	
___ Friday, Mar. 2	___ Carnival!	\$25-\$35	___ Union	___ am (\$5) ___ pm (\$5)	
___ Monday, Mar. 5	___ Hug Worts	\$25-\$35	___ Rumney	___ am (\$5) ___ pm (\$5)	
___ Monday, Mar. 5	___ Ski Step Up	\$5	___ U-32	Not available	___ have skis ___ need



# Community Connections Winter Vacation '12 Day Camps

**Monday, February 27**

**All About Snow!**



**K-6, Drop-off and pick-up at U-32 Shapiro  
8:30-4:30 (or pre-register for extended care)**

Join us exploring the U-32 trails. We will snowshoe, cross-country ski and slide the big hill. Enjoy some hot chocolate to warm ourselves up while building snow forts and sculptures. Bring a sled and your own equipment or use ours.

**\*\*6th graders: see our middle school flier for  
Up & Down: Climb and Sled Burlington (\$60, 9-4)**

**Tuesday, February 28**

**Hot & Cold!**

**K-6, Drop-off and pick-up at U-32 Shapiro  
8:30-4:30 (or pre-register for extended care)**

Do Mazes and Labyrinths intrigue you? Join us to create mazes and puzzles, both inside and outside. We'll get some sliding in, too. After lunch we bus to VTC's SHAPE pool for an afternoon of swimming.

Bring a bathing suit and towel!! Bring outdoor gear for the rest of the day!!

**Wednesday, February 29**

**Treasure Hunting**



**K-6, Drop-off and pick-up at Union Elementary  
8:30-4:30 (or pre-register for extended care)**

Let's find some treasure! We will explore Hubbard Park and look for hidden treasure using GPS technology. Trade or keep what you find. We will enjoy warmth by the fire, have some hotdogs for snack and go sliding down the famous Hubbard Park Hill.

**\*\*6th graders: see our middle school flier for  
Leap Day—Ski/Ride Northeast Slopes (\$40, 8:30-5)**

**Thursday, March 1**

**Swim & Gym**

**K-6, Drop-off and pick-up at U-32 Shapiro  
8:30-4:30 (or pre-register for extended care)**

We're going to college for the day! Bus to Vermont Technical College with its great pool and gym. There will be time to swim and time in the gym for free play, relay races, basketball and other organized activities. FUN!

Bring a bathing suit, towel, and gym shoes!!

**\*\*6th graders: see our middle school flier for Surf & Snow at Jay Peak (\$75, 7-5:30)**

**Friday, March 2**

**Carnival!**



**K-6, Drop-off and pick-up at Union Elementary  
8:30-4:30 (or pre-register for extended care)**

Come one come all to the Big Top Bouncy CARNIVAL!

You will have a great time jumping in our bouncy house, clowning around with some silly friends, taking a shot at some fun games. Get your face painted or try a temporary tattoo.

**\*\*6th graders: see our middle school flier for  
Block It & Rocket (\$20, 9-4)**

**Monday, March 5**

**Hug Worts School of Magic**



**K-6, Drop-off and pick-up at Rumney School  
8:30-4:30 (or pre-register for extended care)**

Join real Vermont wizards for a full day of hands on magic and fun! You will make and learn to use your very own wand, learn the secret of the most powerful spell ever, explore the mysteries of tree, stone and creature, and brew up a healing potion to heal the Earth.

**\*\*6th graders: see our middle school flier for  
Warren Rocket Trip (\$40, 9-4)**

**Monday, March 5**

**Cross Country Ski Step-Up Day All skate skiing 9am-3pm**

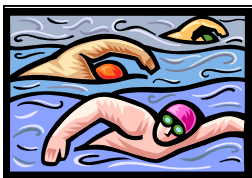
**Grades 4-8, Drop-off and pick-up at U-32 Auditorium Entrance**

Are you interested in skate skiing? Have you wondered about joining the X-C ski team? Here's your chance to get a taste! Meet team members and coaches, ski with them, have a ski-skating clinic, and tour the U-32 trails. Call Bill Merrylees at 223-3456 to check equipment and see if this course is right for you. This course is weather and snow dependent—we will inform you of the camp's status by the evening before.

Fee \$5 9 am-3 pm No extended care.

**\*\* For 6th graders only—there are more camp opportunities in our middle/high school flier. Ask for one, or view it on [www.communityconnections.us](http://www.communityconnections.us). Fees and times for these camps vary. Extended care is not available.**

**SIGN UP ON THE OTHER SIDE—CLIP AND SEND IN!**



**Don't get lost!!** Union Elementary is in downtown Montpelier on Park Street. Rumney School is in Middlesex—out Route 12, (Elm Street), left on Shady Rill. U-32 Shapiro is the brown building at the far end of the U-32 parking lot. U-32 auditorium is to the left of the main building entrance.

Do we have your 2011-2012 Registration Form yet? If not, visit our website [www.communityconnections.us](http://www.communityconnections.us) and download a form to mail in with your sign-up.

Feel free to call our office if you're not sure if we have it on file this year, 223-3456.

We must have this form before your child can participate in our programs. Thanks!